



MyLab Process Technology

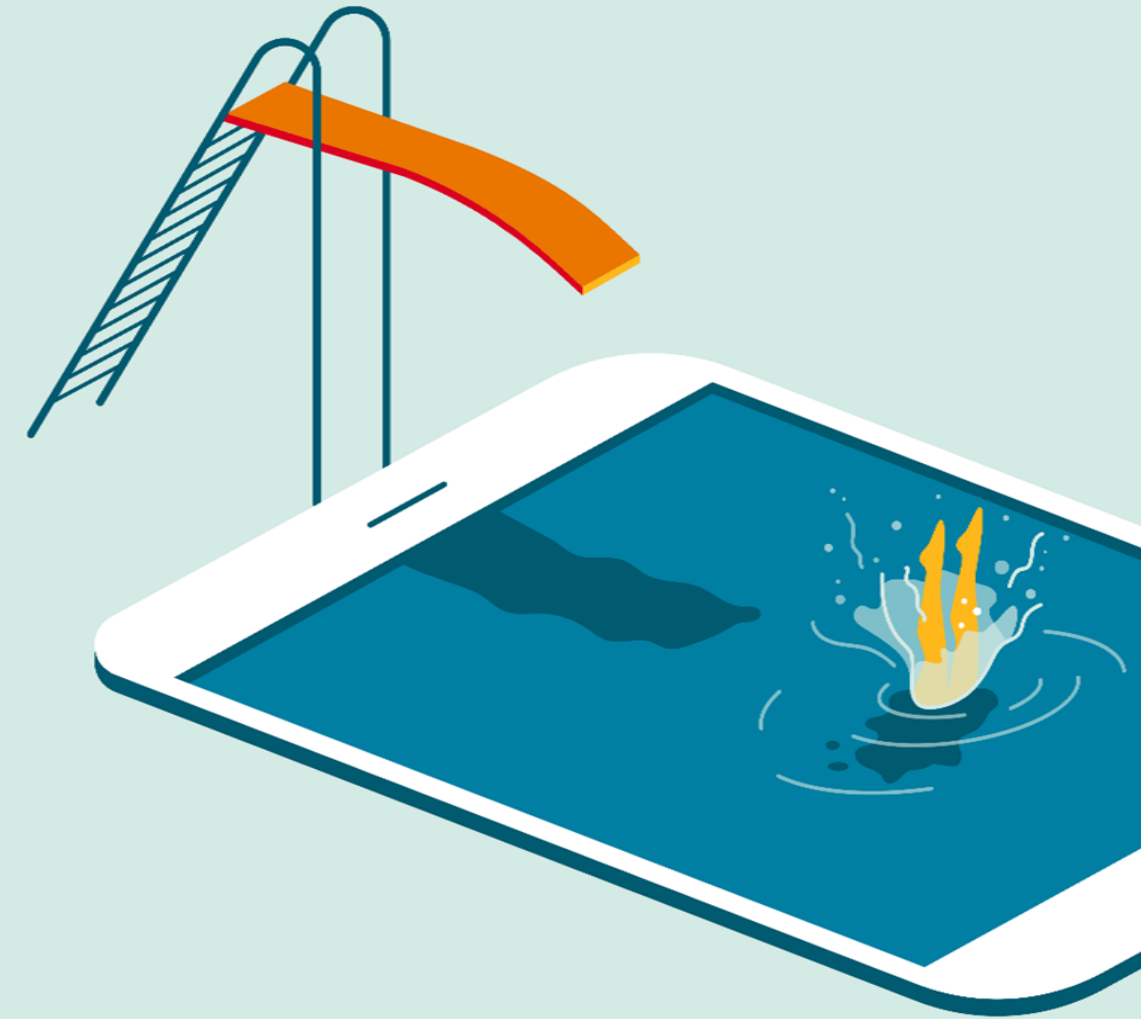
6 Reasons to Embrace Digital

Reasons 1, 2, 3

Personalized Learning: 57% of students feel that it is the responsibility of the institution to help them make the shift from print-based learning materials to **digital** course materials and courseware.

Mobile Access: Of the 18.6 million students enrolled in higher education institution, 88% own laptops, 85% own smartphones and 50% own a tablet.

Student engagement: Engaged students are the Holy Grail of education — those who are actively learning and prepared for class. Advances in **digital** learning make it a powerful tool to retain students' attention and improve their outcomes.



Reasons 4, 5, 6

Relevant & updated content: In the digital age, we're all used to having the most relevant news and content at our fingertips.

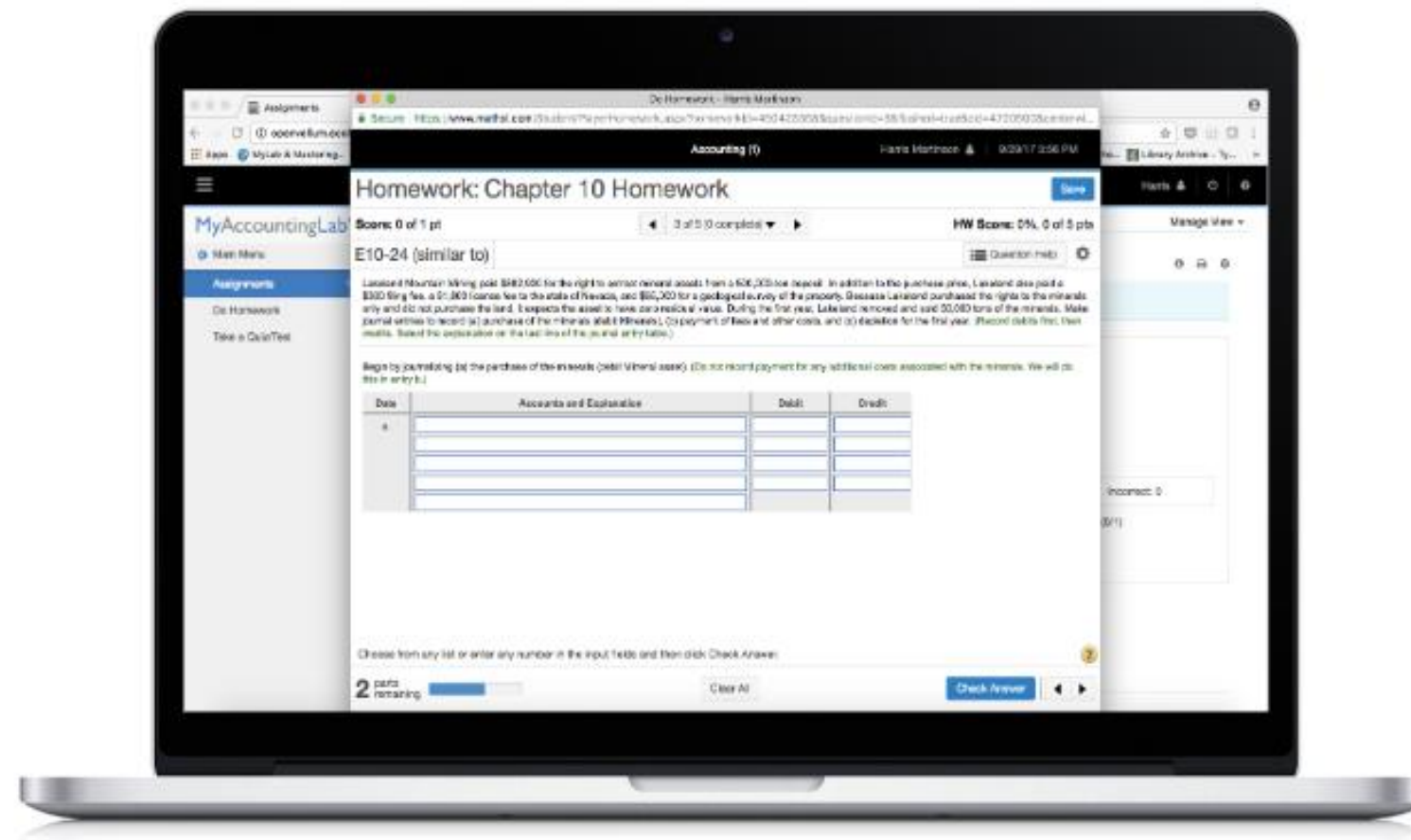
Active learning: Digital learning powers continuous feedback from content-embedded assessment, simulations, and adaptive learning. When students can choose their own activities and track their own progress, it builds retention and improves confidence and motivation.

Distance enrollment: Learners are no longer limited to the classroom's boundaries or even the proximity of the college/university. In fact, more than five million higher education students are learning online. There has been an 11% increase in distance learning enrollment while we have seen a 3% decrease in overall enrollment.



Pearson MyLab Process Technology

MyLab = Respected Content + Personalized Learning + Performance Data & Analytics



MyLab

Launched
in 2001



50M+
student
users



8,370+
campuses



2018 to date:
2.5M hours of
student homework

Performance Data & Analytics

Performance Data and Analytics

Student:

- Who in my course needs help?
- Why is this particular student struggling?
- What topics is this student struggling with?

Course:

- How is my class performing overall?
- What topics is my class struggling with?



Gradebook

As an institution, you would want to use the gradebook to:

- Access student results for one course or section
- Sync grades with your LMS
- Export grades and grade data into a spreadsheet
- Manage incomplete assignments, assignment weights, and other gradebook settings
- Understand how students are performing on specific assignment questions
- Conduct item analysis to understand more about each question in your assignments

Performance Analytics

As an institution, you would want to use performance analytics to:

- Access student results for *more than one* course or section
- Conduct analysis and gain deeper insight into student performance
- Get predictive analytics on who may be “at risk”

LMS Integration & Accessibility

LMS Integration

A connection between MyLab and Learning Management Systems (LMS) simplifies the teaching and learning experience for instructors and students. Regardless of LMS product, integration allows easy access to Pearson content and a seamless way to sync grade data.



Capabilities by LMS

Single Sign-on

With single sign-on from Blackboard, Canvas, Brightspace by D2L, and Moodle, students have a seamless access to MyLab without having to enter their Pearson credentials.

Grade Sync

Flexible grade sync capabilities allow instructors to control exactly which MyLab grades should be transferred to the LMS gradebook.

Content Linking

Instructors may customize which links to MyLab content, from the homepage to the assignment, are posted to the LMS for students to have direct access to MyLab course material.

SUPPORTED LMS

The logo for Blackboard learn+ features the word "Blackboard" in a bold, black, sans-serif font, with "learn+" in a smaller, black, sans-serif font below it. The "+" sign is a small blue plus sign.The Moodle logo consists of a stylized orange graduation cap icon to the left of the word "moodle" in a lowercase, orange, sans-serif font.The Brightspace logo features an orange circle with a white letter "B" inside, followed by the word "brightspace" in a lowercase, black, sans-serif font, and "by D2L" in a smaller, black, sans-serif font below it.The Canvas logo features a red circular icon with white dots inside, followed by the word "canvas" in a lowercase, black, sans-serif font, and "BY INSTRUCTURE" in a smaller, black, sans-serif font below it.

Accessibility

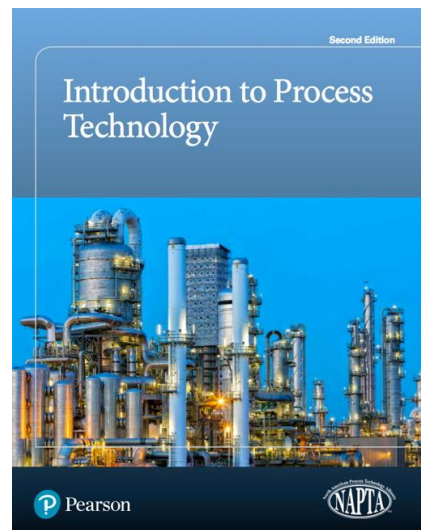
Pearson works continuously to ensure MyLab is as accessible as possible to all students and we're working toward achieving WCAG 2.0 Level AA and Section 508 standards, as expressed in the Pearson Guidelines for Accessible Educational Web Media.

Our products support customers in meeting their obligation to comply with the Americans with Disabilities Act (ADA) by providing access to learning technology programs for users with disabilities.



Outcomes

- You will have created or understand how to create a Process Technology course in our Mylab
- Understand how to navigate the site
- Be able to access the etext
- Understand how to use the grade book and create assignments
- Be able to download instructor resources



Demo!

MyLab Website

[Pearson.com/mylab/process-technology](https://pearson.com/mylab/process-technology)

[Video](#)

Instructor Access code

HEAIRC-DRNNK-NAMEN-WEIGH-ASTIR-CHARD

The screenshot shows the Pearson MyLab & Mastering homepage. At the top, the Pearson logo is followed by "MyLab | Process Technology" and a "MYLAB & MASTERING HOME" link. Below this is a banner for "Reach every student" with the text "Personalize the learning experience and improve results for each student with MyLab." and a button "Find out how you can reach every student". On the right side, there is a "Sign In" section with a "Sign in" button, a "Forgot username or password?" link, and a "Register" section with "Student" and "Educator" buttons. Red arrows point from the "Sign in" button to the "Student" button and from the "Student" button to the "Educator" button. At the bottom left, there are two columns of links: "Educators & Administrators", "Results Library", "Features", "Students", "Get Registered", "Features", and "Support".

Pearson | MyLab | Process Technology

MYLAB & MASTERING HOME

Learn more about Summer 2018 enhancements for your MyLab course!

Reach every student

Personalize the learning experience and improve results for each student with MyLab.

Find out how you can reach every student

Sign In
Already registered? Sign in with your Pearson account.

Sign in

Forgot username or password?

Register
Need access? Start here!

Student

Educator

Educators & Administrators
Results Library
Features

Students
Get Registered
Features
Support

Dear Brian,

You successfully created your course. To access your new course, [sign in](#) and select the course name. Your username is: bradydemo

Course Name: Process Tecnology 2e

Course ID: hoehl05958

Course Type: Student Course

Course Dates: Sep 17, 2018 - Mar 06, 2020

Enrollment Dates: Sep 17, 2018 - Sep 05, 2019

Course Materials: MyLab Process Technology for Introduction to Process Technology 2nd Edition

To help students enroll, [download the Student Registration Instructions](#) and send to your students. You can also download the instructions from your course details page.

- If a section instructor is needed for this course, ask your sales representative for a section instructor access code. For instructions, see [Enroll a section instructor](#).
- Learn about [training opportunities and support materials](#).
- For assistance using features while in your course, select Help at the top of the page.

Introduction to Process Technology



Implementation and Support

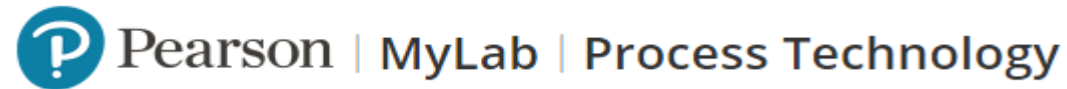
We strive to stand out as the essential partner for your programs and faculty implementing our learning solutions.

Our implementation and technology specialists will be there to support you every step of the way on your journey to preparing confident, competent craft professionals.

<https://www.pearson.com/us/contact-us.html>



MyLab Training & Support Resources



Educators & Administrators

Results Library

Features

Titles Available

Training & Support

LMS Integration

Educator Training & Support

Training Resources

► Implementation Guide

► How Do I? Videos

► LMS Integration Services

Support Resources

► System Requirements

► Sign-in Help

► Accessibility Information

Requesting Desk Copies

Contact your Pearson Sales Representative.

<https://www.pearson.com/us/contact-us.html>

Contact Us

We're here to help. Explore our resources to find what you need.

Contact a rep

[PreK-12 Education](#)

[Higher Education](#)

[Automated Language Assessment](#)

[Clinical Assessment](#)

[Large-Scale Assessments](#)

[Learning Assessment](#)

[Talent Assessment](#)

[Teacher Licensure Testing & Performance](#)

[Assessment](#)



Get support

Find out whom to contact about product, curriculum, and assessment questions.

[View support information](#)





Questions?